

## Single level switch LS-3



Ideal for shallow tanks or restricted spaces, or for any low-cost, high volume use. LS-3 Series are available in FDA approved materials, consult MEYLE for details.

Polysulfone Float



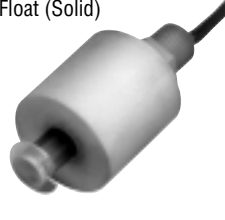
For water based liquids, with limited use in oils and chemicals

Buna N Float



Ideal for oils and fuels

Polypropylene Float (Solid)

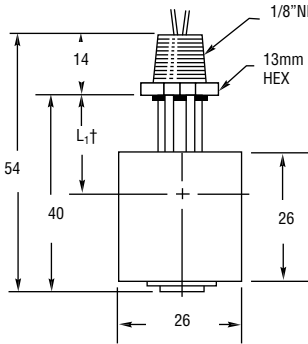


With Polypropylene stem and float, switch offers broad chemical compatibility

Polypropylene Float (Hollow)



Features a low specific gravity float offering broad chemical compatibility to satisfy a wide variety of applications



$L_1 \uparrow$  Switch actuation level, nominal (based on a liquid specific gravity of 1.0).  
 Polysulfone Float: 3/4" (19.0mm)  
 Polypropylene Float (Hollow): 13/16" (20.6 mm)  
 Polypropylene Float (Solid): 9/16" (14.3 mm)  
 Buna N Float: 13/16" (20.6mm)

### Alternate Mountings

| 3/8"-16 Straight Thread  | G1/8" 1/8"-28 BSP | M12x1.75 Straight Thread |
|--------------------------|-------------------|--------------------------|
|                          |                   |                          |
| Supplied with mating nut |                   |                          |

LEVEL SWITCHES

### Specifications

|   | Polysulfone   | Nylon/Buna N  | Polypropylene   | Polypropyl. (hollow)                                    |
|---|---|---|---|---|
| <b>Material stem:</b>                               | Polysulfone   | Nylon*  | Polypropylene**   | Polypropylene**   |
| <b>Material float:</b>                              | Polysulfone   | Buna N  | Polypropylene   | Polypropylene (hollow)                                  |
| <b>Operating pressure:</b>                          | 3 bar   | 10 bar  | 10 bar  | 3 bar   |
| <b>Temperature: Cable</b>                           | -40°C...+80°C   | -20°C...+80°C   | -40°C...+65°C   | -40 °C...+80°C  |
| <b>Leads</b>  | -40°C...+107°C  | -20°C...+121°C  | -40°C...+65°C   | -40°C...+107°C  |
| <b>Depth of immersion at a density of 1:</b>        | ~15 mm  | ~9 mm   | ~19 mm  | -13 mm  |
| <b>Min. specific gravity of the liquid:</b>         | 0.75  | 0.45  | 0.90  | 0.60  |
| <b>Type of reed switch:</b>                         | SPST 50 VA cable<br>SPST 20 VA leads                    | SPST 50 VA (cable)<br>SPST 20 VA (leads)                | SPST 50 VA (cable)<br>SPST 20 VA (leads)                | SPST 50 VA (cable)<br>SPST 20 VA (leads)                |
| <b>Electrical connection: (Length: appr. 0.6 m)</b> | Cable: 0.34 mm <sup>2</sup> PVC<br>Fly lead: AWG 22 PVC | Cable: 0.34 mm <sup>2</sup> PVC<br>Fly lead: AWG 22 PVC | Cable: 0.34 mm <sup>2</sup> PVC<br>Fly lead: AWG 22 PVC | Cable: 0.34 mm <sup>2</sup> PVC<br>Fly lead: AWG 22 PVC |
| <b>Mounting thread:</b>                             | 1/8" NPT  | 1/8" NPT, G1/8", M12x1.75, 3/8x16                       |   |   |
| <b>Protection rating :</b>                          | IP64  | IP64  | IP64  | IP64  |
| <b>Weight: approx</b>                               | 20 g  | 20 g  | 20 g  | 20 g  |

| Order data   | Order No. | Mounting    | Order No. | Mounting     | Order No. | Mounting      | Order No. | Mounting               |
|--------------|-----------|-------------|-----------|--------------|-----------|---------------|-----------|------------------------|
|              |           | Polysulfone |           | Nylon/Buna N |           | Polypropylene |           | Polypropylene (Hollow) |
| <b>Cable</b> | 010-2919  | 1/8 NPT     | 171512    | G1/8         | 171515    | G1/8          | 171518    | G1/8                   |
|              |           |             | 189786    | M12 + nut    | 189787    | M12 + nut     | 189739    | M12 + nut              |
| <b>Leads</b> | 42295     | 1/8 NPT     | 162745    | 1/8NPT       | 116826    | 1/8NPT        | 142505    | 1/8NPT                 |
|              |           |             | 171511    | 3/8UNC       | 171514    | 3/8UNC        | 171517    | 3/8UNC                 |

\* Not suitable for long term use in water. \*\* Not suitable for Hydrocarbons.

### Meyer Industrie-Electronic GmbH - MEYLE

Carl-Bosch-Straße 8  
 49525 Lengerich/Germany  
 Internet: www.meyle.de

Tel.: (+49) 0 54 81/93 85-0  
 Fax: (+49) 0 54 81/93 85-12  
 E-Mail: sales@meyle.de

# LS-3 Specials

Unique features make these LS-3 Models special. These small switches feature unique configurations for special applications.



**LS-3 Tripod**

This switch was originally designed for an ice maker. Since only the float comes in contact with the media, there is no lime build-up on the switch or stem. This sensor is meant for high level alarm usage only.



**LS-3 Slosh Shield**

Compact, all-polypropylene switch with slosh shield is ideal for use with turbulent liquids in small tanks. FDA approved materials.



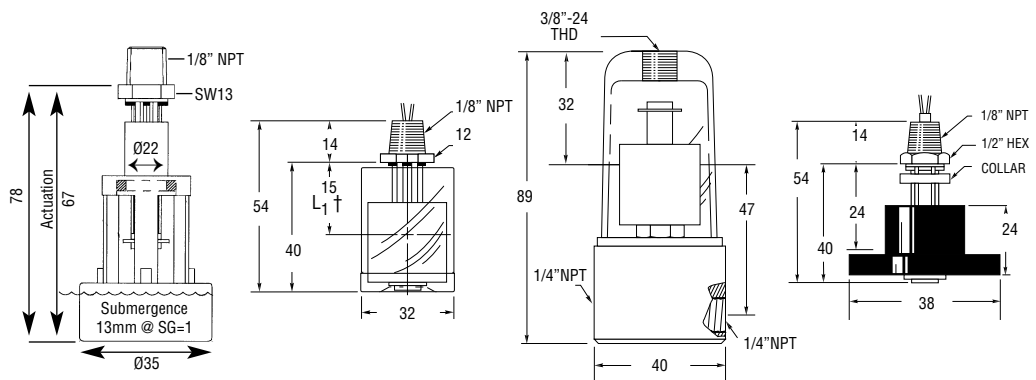
**LS-3 Bottle Level**

For external mounting on tanks too small to accommodate internally mounted switches. (See note below)



**LS-3 Low Level**

For detecting levels as low as 16mm from tank bottom. Use in water, gasoline, some oils and chemicals.



## Specifications

|                                | LS-3 Tripod                         | LS-3 Slosh Shield                   | LS-3 Bottle Level                         | LS-3 Low Level                      |
|--------------------------------|-------------------------------------|-------------------------------------|---|-------------------------------------|
| <b>Materials</b>               |                                     |                                     |   |                                     |
| <b>Stem and Mounting</b>       | Polypropylene                       | Polypropylene ††                    | Polysulfone                               | Polysulfone                         |
| <b>Float</b>                   | —                                   | Polypropylene                       | Polysulfone                               | Buna N                              |
| <b>Other Wetted</b>            | —                                   | —                                   | Brass, Aluminium, Polycarbonate, Viton A  | Epoxy                               |
| <b>Min. Liquid Sp.Gr.</b>      | .90                                 | .90                                 | .75                                       | —                                   |
| <b>Operating Temperature</b>   | -40°C to 82°C                       | -40°C to +65.6°C                    | -40°C to +48.9°C                          | -40°C to +82.2°C                    |
| <b>Pressure, bar, Max. ***</b> | 10                                  | 10                                  | 3   | 3                                   |
| <b>Switch, SPST</b>            | 20 VA Resistance, N.O., Dry         | 20 VA, N.C./N.O. Dry**              | 20 VA, N.C. Dry                           | 20 VA, N.C. Dry                     |
| <b>Material Compliance</b>     | FDA                                 |                                     |   |                                     |
| <b>Electrical Termination</b>  | No. 22 AWG, 0.6m L., PVC Lead Wires | No. 22 AWG, 0.6m L., PVC Lead Wires | No. 22 AWG, 1.8m L., Polymeric Lead Wires | No. 22 AWG, 1.8m L., PVC Lead Wires |
| <b>Mounting</b>                | 1/8" NPT                            | 1/8" NPT                            | 3/8 UNF/1/4NPT                            | 1/8" NPT                            |
| <b>Protection Rating</b>       | IP64                                | IP64                                | IP64                                      | IP64                                |
| <b>Weight approx.</b>          | 100g                                | 80g                                 | 170g                                      | 60g                                 |

\*\* Switch operation is selectable, N.O. or N.C.. by inverting the float on the unit stem.  
 \*\*\* Maximum pressure at 70°F (30°C).  
 † L<sub>1</sub>= Switch actuation level, nominal (based on a specific gravity of 1.0).  
 †† Consult factory for other available materials.

Note: LS-3 Series Bottle Level Switch is also available with any of the float materials shown on LS-3 page. Contact MEYLE for correct part number.

## Order data

|  | LS-3 Tripod | LS-3 Slosh Shield | LS-3 Bottle Level | LS-3 Low Level |
|--|-------------|-------------------|-------------------|----------------|
|  | 166880      | 142545            | 46999             | 76707          |