

FS-200 2.0 - 190 (l/min) with pre-adjusted set points

The FS-200 range of flow switches offer accurate flow detection, with 1% repeatability, with a wide range of flow and port sizes. The durable construction delivers long life repeatability in either water or oil. The design of large flow paths keep pressure drop low, thus are ideal for detection of flow in high volume lubrication, cooling or process applications.

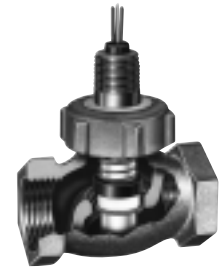
Specifications (All pressure data related to water at +20 °C)

Max. flow	see order numbers
Max. operating pressure	27 bar at +20 °C
Proof pressure	45 bar
Temperature range	- 20 °C...+150 °C
Set points	see order numbers
Switching function (related to increasing flow)	SPDT
Factory mounting position with set point adjustments	horizontal, electrical connection up
Repeatability	±1%
Adjustment accuracy	±10%
Hysteresis	max. 15%
Mounting	1" NPT...2" NPT (see "dimensions" and "order number")
Electrical connections	- lead wire: FEP, 0,6 mm ² (length: approx. 1 m)
Enclosure	- IP 44 (with lead wire) - IP 54 (with terminal box)
Electrical data contact rating	20 VA; 0,5 A; 250 V~
Weight	see "dimensions"

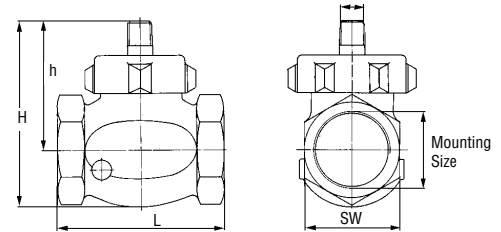
Order numbers

Set point (l/min)	Mounting	Max. flow (l/min)	Order number Housing Bronze	Order number Housing Stainless Steel
2.0 4.0	1" NPT	80	022-7051	022-7059
7.5 11.5			022-7052	022-7060
15.0 19.0			022-7053	022-7061
22.5 30.0			022-7054	022-7062
			022-7055	022-7063
			022-7056	022-7064
4.0 7.5	1 1/4" NPT	140	022-7057	022-7065
15.0 22.5			022-7058	022-7066
30.0 37.5			022-7067	022-7076
45.0 60.0 75.0			022-7068	022-7077
			022-7069	022-7078
			022-7070	022-7079
6.0 11.5	1 1/2" NPT	200	022-7071	022-7080
19.0 28.5			022-7072	022-7081
37.5 57.0			022-7073	022-7082
75.0 115.0			022-7074	022-7083
			022-7075	022-7084
			022-7085	022-7093
7.0 15.0	2" NPT	350	022-7086	022-7094
19.0 37.5			022-7087	022-7095
57.0 95.0			022-7088	022-7096
132.5 190.0			022-7089	022-7097
			022-7090	022-7098
			022-7091	022-7099
	022-7092	022-7100		
			022-7101	022-7109
			022-7102	022-7110
			022-7103	022-7111
			022-7104	022-7112
			022-7105	022-7113
			022-7106	022-7114
			022-7107	022-7115
			022-7108	022-7116

*Order numbers are valid for units with the electrical connection "lead wire". If you need a unit with the electrical connection "terminal box", please select the respective "lead wire" order number and add: "...with mounted terminal box 912-0615 or 912-0625. See drawing (page FS-200)



Dimensions (in mm)



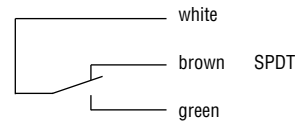
Housing: Bronze or Stainless Steel
 Disc: Stainless Steel
 Spring: Stainless Steel
 O-Ring: Viton®
 Magnet: PTFE/Ceramic

Mounting D	1" NPT	1 1/4" NPT	1 1/2" NPT	2" NPT
L	83.5	98.5	112.5	136.5
h	76.0	81.0	89.0	101.5
SW	46	55	65	80
H	104	118	132	148

Approx. weight	1.2 kg	1.8 kg	2.5 kg	4.0 kg
----------------	--------	--------	--------	--------

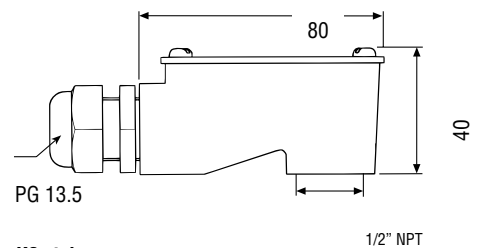
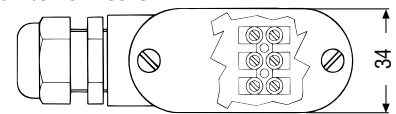
Pressure drop diagram - (see page 12)

Wiring diagram



Terminal boxes

Conduit style
Order Number: 912-0615



K6 style
Order Number: 912-0625

