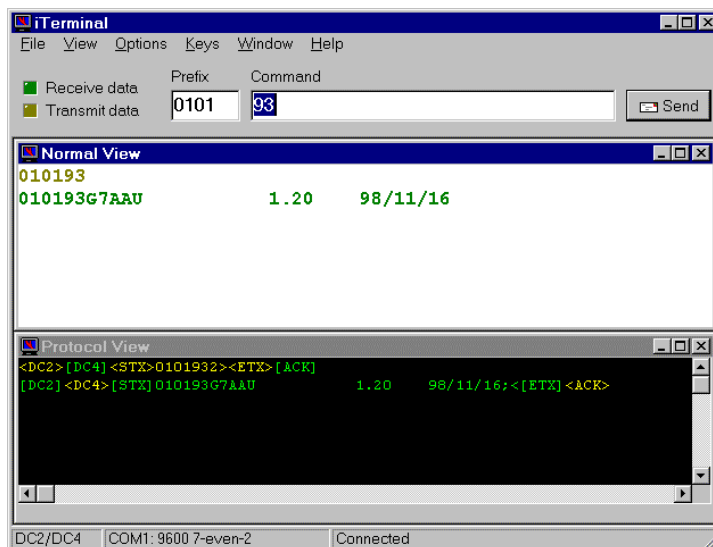


iTerminal



Windows oriented device driver to control communication with readers.

Key features

- Various communication protocols
- OLE automation
- Windows oriented
- Adjust reader settings

iTerminal is a 32 bit Windows application for serial communication with all RFID-devices using the DC2/DC4, CR/LF, S3964 or STX/ETX protocol.

iTerminal requires a Windows environment and can be started stand-alone or remotely controlled by OLE automation.

The device driver enables the user to easily implement the hardware and limits additional software adjustments on the user side to a minimum.

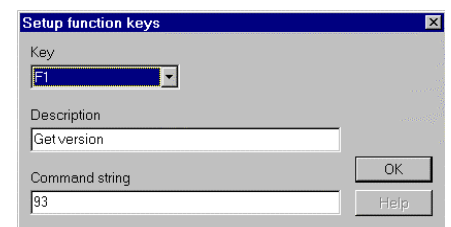
OLE automation

iTerminal can be remote controlled due to the Object Linking and Embedding (OLE) automation function. By using iTerminal the RFID hardware can be applied in all kind of applications where identification is required without major changes to the actual application software.

Used as a Stand-alone application iTerminal can be easily adapted to specific customer demands.

Customise

Function keys can be linked to specific commands. When the function key is pressed the associated command will be transmitted to the serial port.



Various protocols

Besides the standard DC2/DC4, CR/LF and STX/ETX protocols the Siemens S3964R and Skidata BLL4 protocol is supported by iTerminal. In the Setup-menu all communication parameters are set.

SPECIFICATIONS

TECHNICAL INFORMATION	ITERMINAL
Required platform	Windows 95/98/XP and NT4.0.
Applicable with readers	TRANSIT Standard reader and TRANSIT Extended reader SGIII, GIII-C, GIII-C CM, GIII-C EX and XS110 W
Interface	RS232
Communication protocols	DC2/DC4, CR/LF, STX/ETX, S3964R and Skidata BLL4
Baud rate (bits)	600...115200
Part number	9880801 iTerminal
Documentation	Manual iTerminal

Screen lay-out iTerminal

